

# ADULT SOCIAL CARE DEVELOPMENT PROGRAMME

## Highlight Report

**Date Submitted: 2<sup>nd</sup> February  
2016**

**PROJECT: Alternatives to Traditional Care**

**PROJECT SPONSOR: Graeme Betts**

**CHANGE LEADER: Janine Moorcroft**

**PROGRAMME MANAGER: Jayne Cowan**

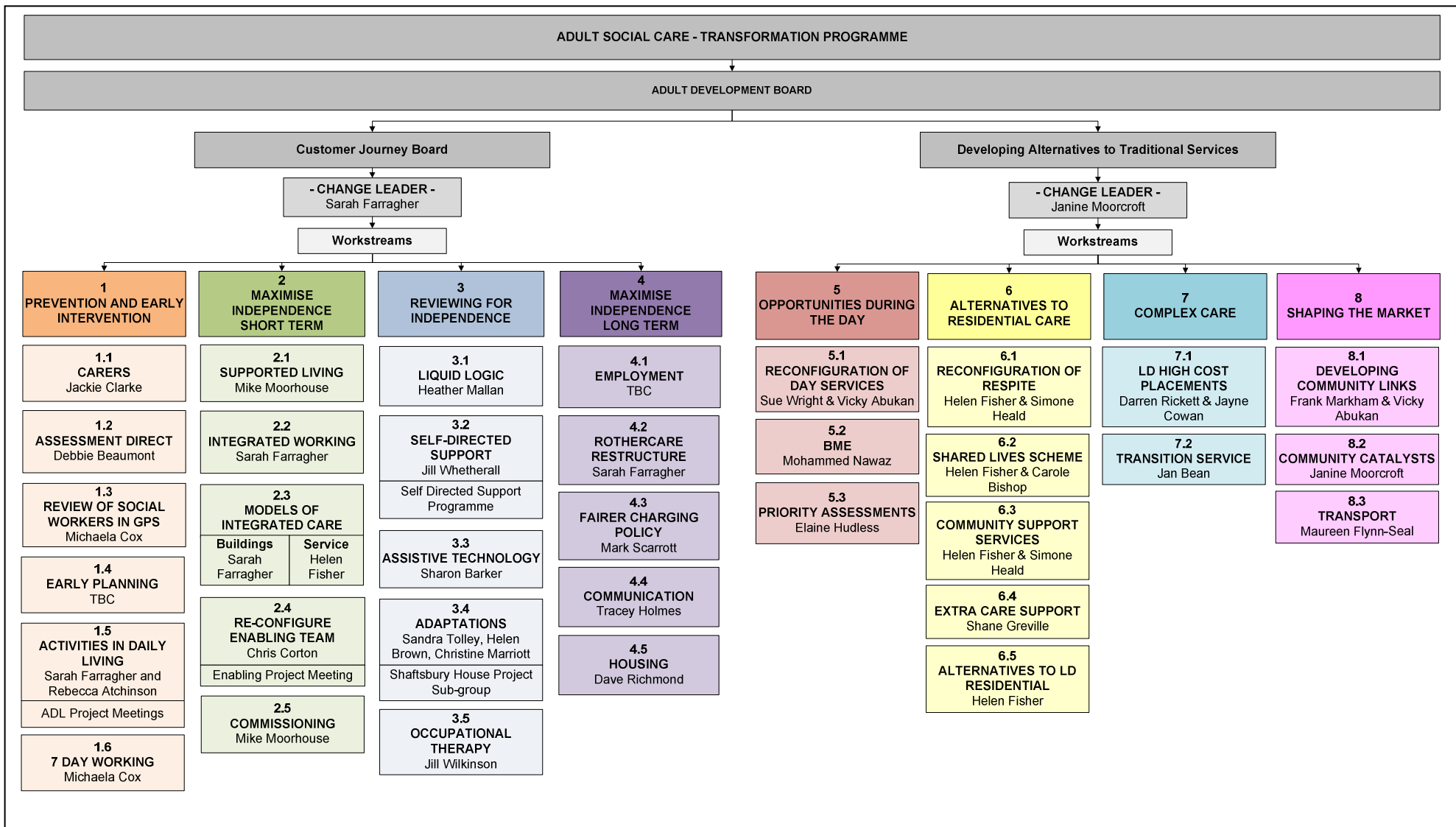
**SAVINGS TARGET:**

### **Scope:**

- To ensure whenever possible adults with disabilities and older people in Rotherham can live independently and achieve quality outcomes in their local communities.
- To ensure there are a range of opportunities for adults with disabilities and older people to enable them to exercise control, choice and independence
- To ensure that the development of future services is co-produced with customers, stakeholders and partners
- To maximise the use of resources
- To be responsible to the overarching ASC Development Programme

**Number of workstreams: 4**

**Reporting period: February**



**RAG Key**



- RED** Seriously compromised and at high risk of failure
- AMBER** At risk of failure, benefits compromised or uncertainty over timescales/costs
- GREEN** Proceeding according to plan and milestones achieved.